

THANK YOU FOR CHOOSING ROBOTIQ

This step-by-step guide will allow you to install and test your Wrist Camera on a UR3, UR5 or UR10 Universal Robots with a CB3.1 controller.



1. WHAT IS SUPPLIED?

Standard upon delivery of a Wrist Camera kit for Universal Robots:

- Wrist Camera (RWC-CAM-001)
- Tool plate (RWC-TOOL-062)
- Calibration board (ACC-CALIB-BOARD)
- Color background (ACC-TEACH-BACK)
- 4 ports USB hub splitter (ACC-USB-4-HUB)
- USB license dongle (ACC-USB-DONGLE)
- 16 Gig USB stick (ACC-USB-16G)
- Necessary hardware



2. TOOLS YOU'LL NEED



2 mm
Slotted Screwdriver



3. GET THE LATEST

➔ Visit support.robotiq.com

- Download and unzip the content of **UCC-X.X.X** directly on the provided 16 Gig USB stick (ACC-USB-16G).
- Get the latest instruction manual.



4. MOUNTING

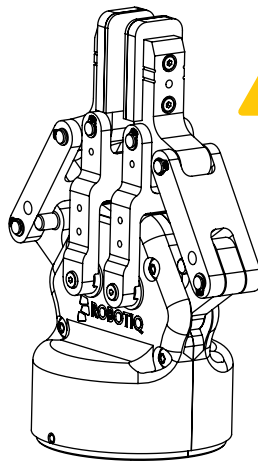
- Place the Wrist Camera (RWC-CAM-001) on the robot arm. Align the dowel pin.

➔ Option 1 :

- Fix the camera on the robot arm using the provided M6 X 12mm (RWC-UR) screws and lock washers.
- Mount the gripper directly on the Wrist Camera using the provided M5 X 35mm (CPL-C3-B) screws and lock washers.

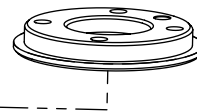
➔ Option 2 :

- Place the tool plate (RWC-TOOL-062) on the camera. Align the dowel pin.
- Fix the end effector on the robot arm, through the tool plate and the camera, using M6 screws. The use of a dowel pin for alignment is recommended.

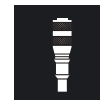
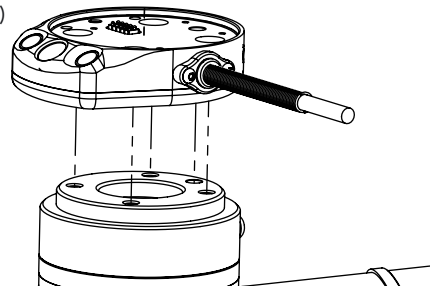


LEAVE ENOUGH EXCESS CABLE TO ALLOW FULL ROBOT MOVEMENT.

Option 2 :
(Screws not provided)

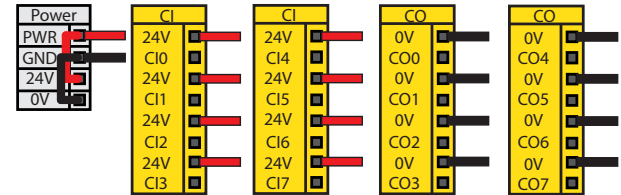


Option 1 :
(Screws provided)



5. WIRING

- Connect the red wire of the device cable to a 24V pin of the robot controller.
- Connect the black wire of the device cable to a 0V pin of the robot controller.



- Connect the 4 ports USB hub splitter (ACC-USB-4-HUB) inside the robot controller.
- Connect the Wrist Camera's USB cable in the USB hub.
- Connect the licence USB dongle (ACC-USB-DONGLE) in the USB hub.



6. SOFTWARE INSTALLATION

- Have the 16 Gig USB stick (ACC-USB-16G) at hand that contains the **UCC-X.X.X** uncompressed content (see step 3).
- With the controller on, insert the 16 Gig USB stick in the 4 ports USB hub.
- From Polyscope's home page, tap **Setup Robot**.
- Go in **URCaps Setup** and tap the + sign.
- Open **Robotiq_Wrist_Camera-X.X.X.urcap** from the USB stick.
- Tap the **Restart** button.
- When Polyscope reopens, go in **Program Robot** and in the **Installation** tab.
- Choose **Camera** and go in **Dashboard**.
- Verify the system status and tap **Install**.
- Wait for the vision server to be installed and for the vision system to start.
- In order to use another USB stick, reboot the robot controller.



DO NOT REMOVE THE 16 GIG USB STICK AND THE LICENCE USB DONGLE, EVEN AFTER THE INSTALLATION HAS BEEN COMPLETED.



7. TEST WRIST CAMERA

- From a robot program, go in the **Installation** tab and then in **Camera**.
 - Go in **Dashboard** and verify that the vision system is running.
 - Go in the **Camera** tab.
 - The output image from the camera will appear.
- ➔ For help with troubleshooting, visit support.robotiq.com.



8. SNAPSHOT POSITION

- From your robot program, go in the **Installation** tab.
- Go in **Features** and define a new point.
- Rename it to the name you want your snapshot position to have and check the **Variable** checkbox.
- Set the point at any position in the robot's workspace.
- Go in **Camera** and then in the **Snapshot Positions** tab.
- Select the point created and tap **Define** to launch the snapshot position wizard.



9. TEACH OBJECT

- From your robot program, go in the **Structure** tab.
 - Go in the **URCaps** tab.
 - Tap the **Cam Locate** button.
 - Go in the **Command** tab and tap **Teach object** to launch the object teaching wizard.
 - You will need to select the previously taught snapshot position.
- ➔ Visit support.robotiq.com to get the latest instruction manual and further information on how to program with the Wrist Camera.



Where automation Pros share
their know-how and get answers.
dof.robotiq.com

ORDER INFORMATION

Below are your product codes and serial numbers.

Please keep this information for your logs.

When contacting Robotiq support, please have this information handy.



WRIST CAMERA

QUICK START GUIDE

For installation on Universal Robots



New product has a 1 year warranty from the above date.
Refer to your product instruction manual for details.

support.robotiq.com

support@robotiq.com
T: 1.418.380.2788 ext.:207

updated November 2016
V1.2